

Please make sure to read the enclosed Ninja Owner's Guide prior to using your unit.

# NUTRI NINJA

## NUTRI NINJA® NUTRI BOWL™ DUO™ WITH AUTO-IQ™ TOTAL BOOST™ QUICK ASSEMBLY

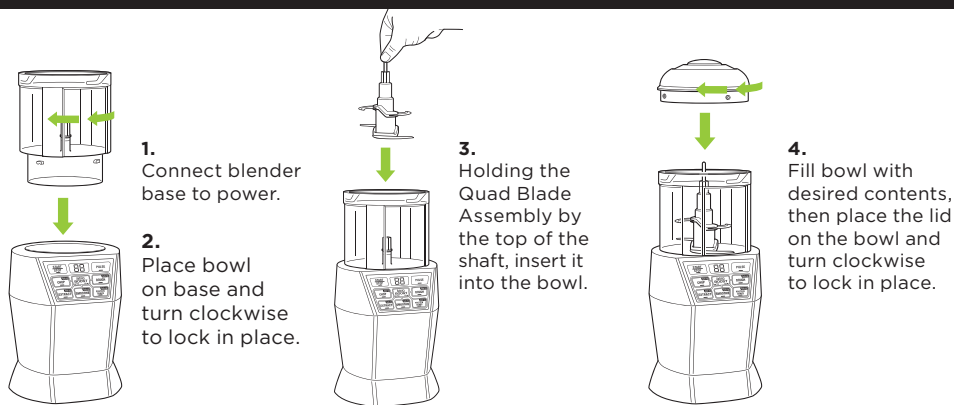
### NUTRI NINJA® CUPS



Display will read "--" once base is properly connected to power source.

**⚠ WARNING:** Handle the Pro Extractor Blades® Assembly with care, as the blades are sharp.

### NUTRI BOWL™



Display will read "--" once base is properly connected to power source.

**⚠ WARNING:** Quad Blade Assembly is sharp and not locked in place. Before pouring, carefully remove blade assembly. Failure to do so will result in a risk of laceration. Refer to the Ninja Owner's Guide for additional information.

SEE REVERSE SIDE TO LEARN MORE ABOUT AUTO-IQ AND TOTAL BOOST.

QUESTIONS? We're here to help. Call 1-877-646-5288 or visit [ninjakitchen.com](http://ninjakitchen.com)

Please make sure to read the enclosed Ninja® Owner's Guide prior to using your unit.

## AUTO-iQ™ TECHNOLOGY WITH TOTAL BOOST™

Auto-iQ Total Boost gives you the perfect consistency for everything from smoothies and juices to sauces and dips. Here's how to get the best results with each program on your Nutri Ninja® Nutri Bowl™ Duo™. (Certain Auto-iQ programs are compatible with each container. You are only able to select programs that are illuminated.)

### HOW BOOST WORKS

BOOST defaults to preset settings. Toggle between YES and NO to customize the consistency of your recipe.

#### BOOST YES:

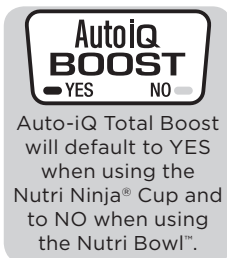
Use BOOST YES for the finest breakdown or the most even consistency in all recipes.

#### BOOST NO:

Use BOOST NO for more thickness or texture in all recipes.



Fresh/Frozen Fruit  
Dairy



Leafy Greens  
Fibrous Ingredients  
Seeds



Frozen Treats  
Dips/Purees/Sauces  
Smoothie Bowls



Veggie Prep  
Salsa



Pie Crust  
Bread/Pizza Dough  
Cookies

## CLEANING

**Dishwasher:** The containers, lids, and blade assemblies are all dishwasher safe. The lids and blade assemblies are top-rack dishwasher safe. Ensure the blade assemblies are removed from the containers before placing in the dishwasher.

**Hand washing:** Wash containers, lids, and blade assemblies in warm, soapy water. When washing the blade assemblies, use a dishwashing utensil with a handle to avoid direct hand contact with blades. Handle blade assemblies with care to avoid contact with sharp edges. Rinse and air-dry thoroughly.



**WARNING:** Handle the blade assemblies with care when washing, as the blades are sharp. Contact with the blades' edges can result in laceration.

**QUESTIONS?** We're here to help. Call **1-877-646-5288** or visit [ninjakitchen.com](http://ninjakitchen.com)