

Please make sure to read the enclosed Ninja® Owner's Guide prior to using your unit.

BEFORE YOUR FIRST BREW

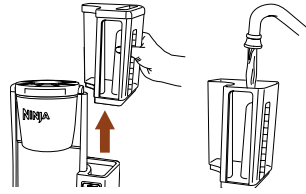
Remove all packaging material from the brewer. Hand-wash all removable parts in warm water. Wipe the warming plate with a damp cloth. Plug in the power cord, and press the power button.

Run two full carafe, Classic Brew cycles without coffee grounds, using water only. Discard the water after each cycle is complete.

For cleaning instructions, please see the enclosed Ninja® Owner's Guide.

1 FILL TO THE DESIRED CUP LINE

Add up to 12 cups of water to the reservoir depending on the amount of coffee you're brewing. Make sure the carafe is in place with the brew-through lid installed.

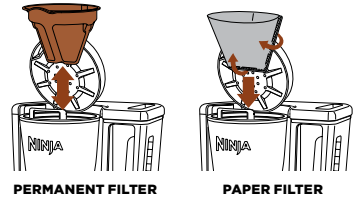


3 INSERT A FILTER

Your permanent filter is already in the proper place—you can add your coffee directly to it.

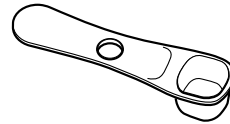
OR

Remove the permanent filter, then fold a #4 paper cone filter along the seams and insert firmly into the brew basket.



3 ADD COFFEE

Use the Ninja® Scoop that stores onboard your brewer to measure the ideal amount of coffee for your brew. Use one scoop of ground coffee for every cup of water.



4 CHOOSE A BREW

SMALL BATCH (Up to 4 cups)

When brewing 4 cups or less, add your desired amount of water to the reservoir and press this button to achieve the same great flavor as a Full Carafe brew.

CLASSIC

For a smooth, balanced flavor.

RICH

For a coffee that is richer than Classic Brew and still smooth.

BREW

The settings from your last brew are always saved, so you can make the same size and type of coffee as last time just by pressing this button. If you're making changes from last time, select your size and type, then press this button to begin the brew cycle.

THERE WILL BE A PAUSE. THAT'S OK.

The pause is just part of the pre-infusion cycle that unlocks the full flavor of your coffee.

5 KEEP YOUR COFFEE WARM



When your brew is complete, the Precision Temp Warming Plate will turn on automatically and stay on for 2 hours.

To turn off warming plate, press the Stay Warm button.